

TP CONNECT - S

**** UPDATE INFORMATION ****

Version 4.x

Installing the UPGRADE Of TP Connect - S Version:

If you already have TP Connect installed on a computer, it is best that you use the UPGRADE option rather than FULL INSTALL. In this way, your Login credentials are retained.

When you do the Upgrade, also ensure that you pick the same directory path that you used for TP Connect originally, which is C:\TPCONN by default. Again, the worst that could happen is that you simply will need to reenter your Login Account Name and other setup parameters.

Overview Of TP Connect - S Version:

TP Connect Version 4 works very similar to the previous version overall as far use the user interface. However, there are BIG changes as to how TP Connect communicates with your supplier's server. The previous version used a file transfer protocol (FTP) to send inquiries and orders and to receive results. This method was slower and more prone to connection time-outs and other issues.

The new version instead uses TCP/IP Sockets, which simply put is a direct data connection to your supplier's computer. Think of it this way - say the old version used to mail an inquiry to the server, and the server mail the results back. And now the new version uses the telephone instead!

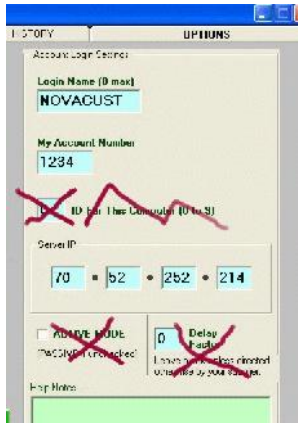


Gone are the old “LOGGED IN”, “STANDBY” and “ERROR” lights of the previous Version #2.

These are now replaced with Socket or Channel indicators. Simply put, TP Connect has available up to 4 data channels to communicate with the server. If a channel is busy, it will use the next available one. However, since data communication speeds are vastly improved, often you will only see channel #1 ever light during an inquiry. And errors are so few now, that we've eliminated the ERROR light altogether!



Login Settings Simplified:



Since Version 4 uses SOCKET connections instead of File Transfer technology, the Login Settings are simplified.

We no longer need a unique Station ID# for each computer running TP Connect in your business.

The new version also eliminates the need for the Delay Factor parameter and Active Mode options as well.

However, since Version 4 uses socket connections, a new parameter "Connection Socket#" is required. This is usually set to 3300 but your supplier will tell you if it is to be set otherwise.



Incomplete Shopping Cart:

Another great improvement in Version 4 is the shopping cart. Now, if for any reason, you close TP Connect with items in your shopping cart (items to be ordered), these items are no longer lost but kept in a file!

The next time you start TP Connect on your computer, you would get a message that items were found in your cart.

You can now decide if you wish to continue with this order OR delete these items by simply answering the prompt.



* * *